

# HMI Controller

## 8" Industrial Fanless Touch Panel Computer

**AHM-6084**



### Features

- 8" High Brightness TFT LCD (400 cd/m<sup>2</sup>), long life-time display, support 800 x 600
- Fanless and CPU VIA Eden 400MHz
- Mini-PCI socket for WLAN solution (optional)
- DC 11~28V wide-range power input
- NEMA 4/IP 65 compliant front panel
- Sealed resistive touch screen
- Support Panel mount



### Display Specifications

LCD	8" SVGA 800x600
Luminance	400 cd/m <sup>2</sup>
Pixel Pitch	0.204 (W) x 0.204 (H)mm
Viewing angle	130°(R/L)
Backlight	40,000 hrs

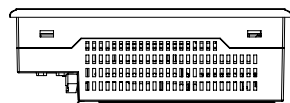
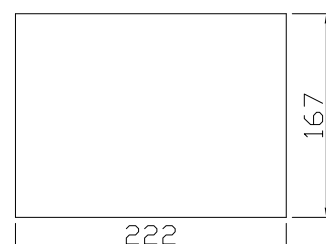
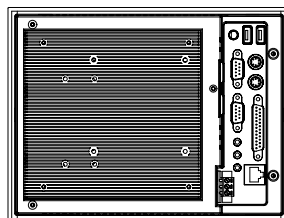
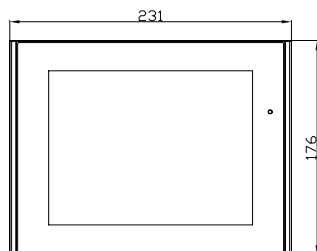
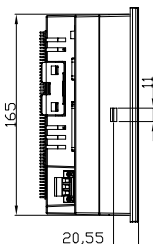
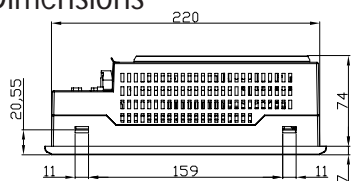
### Mechanical Specifications

Construction	Plastic mold housing
Front Panel Color	Black
CPU	VIA Eden 400 MHz
DRAM	256 MB SDRAM up to 512MB
Storage	1 Compact Flash card slot, or space for 2.5" HDD and 1 CF card slot
Power input	DC 11~28V
Touch Screen	4-wire, analog resistive
I/O ports	2 x COM ports (COM1:RS-232,COM2:RS-232/422/485), 1x LAN (10/100 Base-T), 2 x USB 1.1, 1 x Parallel port, 1 x Stereo audio Mic-in, Line-in and Line-out, 1xPS/2 keyboard & mouse
Dimensions	231(W)x176(H)x74(D)mm
Weight	2.41kgs

### Environment Specifications

Operating Temperature	0~50°C
Storage Temperature	0~70°C
Relative Humidity	10~95% @40°C non-condensing
Vibration	5~17Hz, 0.1" double amplitude displacement, 17~640Hz, 1.5G acceleration peak to peak
Shock	10G acceleration peak to peak (11 msec.)
Rating	NEMA 4/ IP 65 compliant front bezel
Certificate	Meet CE / FCC Class A
Mounting	Panel mount

### Dimensions



**Mounting Hole Size**