

IES-3242GC

>> Industrial 26-port Managed Ethernet Switch

- Supports **O-Ring** (recovery time < 10ms over 250 units of connection), MSTP/RSTP/ STP (IEEE 802.1w/D/s) for Ethernet Redundancy
- Support ACLs, 802.1x User Authentication for security
- Supports SNMP v1/v2c/v3, QoS, IGMP, RMON & Port based/ 802.1Q VLAN Network Management
- Web-based ,Telnet, Console, CLI, and Windows utility (Open-Vision) configuration
- Completely selection to Support 100TX, 1000 Base-T and 1000 Base-X port in SFP connector
- 19 inches rack mountable



> Features

- World's fastest Redundant Ethernet Ring: **O-Ring** (recovery time < 10ms over 250 units of connection)
- Secured ACL supported
- **MSTP/RSTP/STP** (IEEE 802.1w/D/s)
- IGMP snooping for filtering multicast traffic
- Port Trunking for easy of bandwidth management
- Event notification through Syslog, Email, SNMP trap, and Relay Output
- Port lock to prevent access from unauthorized MAC address
- Windows utility (**Open-Vision**) support centralization management and configurable by Web-based ,Telnet, Console, CLI
- Completely selection to support 100TX, 1000 Base-T and 1000 Base-X port in SFP connector
- 19 inches rack mountable

> Introduction

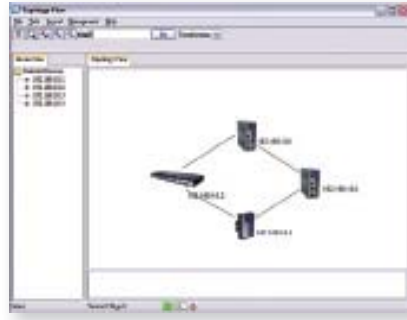
IES-3242GC is managed Redundant Ring Ethernet switch with 24x10/100TX & 2x1000 SFP COMBO ports. With completely support of Ethernet Redundancy protocol, O-Ring (recovery time < 10ms over 250 units of connection), and MSTP/RSTP/STP (IEEE 802.1w/D/s) can protect your mission-critical applications from network interruptions or temporary malfunctions with its fast recovery technology. IES-3242GC can be managed centralized and convenient by a powerful windows utility — Open-Vision. IES-3242GC also supports functions of network management, such as SNMP, RMON, Port Trunking, and Port/Tag-based VLAN security. Therefore, the switch is one of the most reliable choice for highly-managed and Fiber Ethernet application.

> Open-Vision

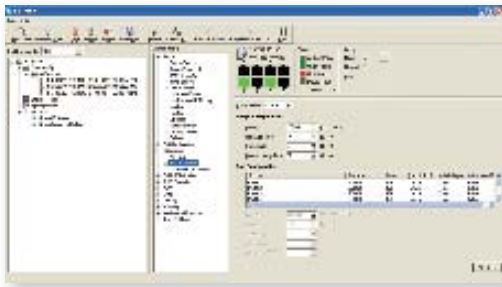
ORing's switches are intelligent switches. Being different from other traditional redundant switches, ORing provides a set of Windows utility (**Open-Vision**) for users to manage and monitor all of industrial Ethernet switches on the industrial network.



Network connection

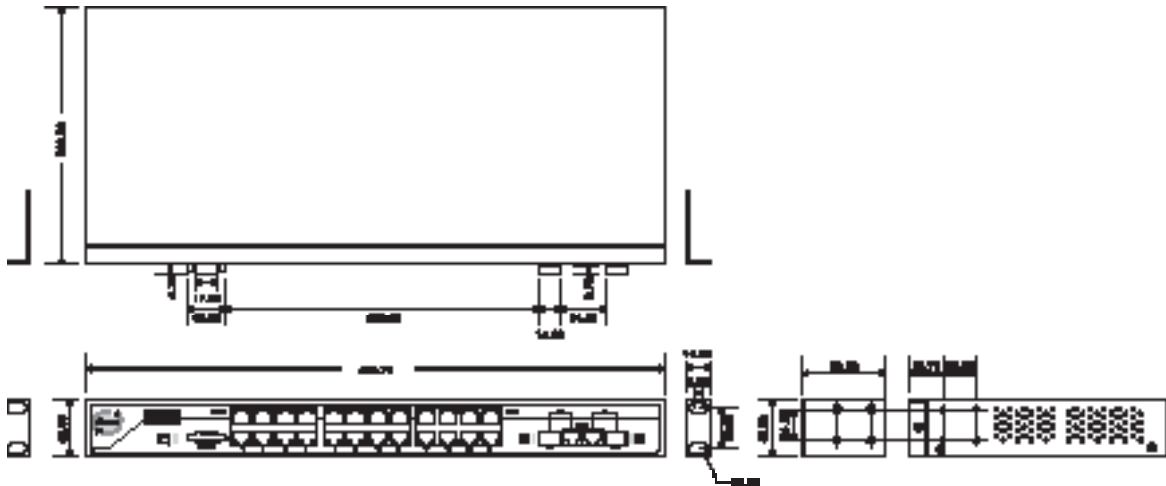


Topology View



Monitoring and Configuration interface

> Dimension



(Unit=mm)

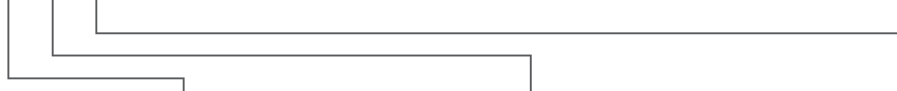
> Specifications

ORing Switch Model	IES-3242GC
Physical Ports	
10/100Base-T(X) Ports in RJ45 Auto MDI/MDIX	24
1000 COMBO with SFP	2
RS-232 Serial Console Port	RS-232 console cable. 9600bps, 8, N, 1
Technology	
Ethernet Standards	IEEE 802.3 for 10Base-T, IEEE 802.3u for 100Base-T(X) and 100Base-FX, IEEE 802.3ab for 1000Base-T IEEE 802.3x for Flow control IEEE 802.3ad for LACP (Link Aggregation Control Protocol) IEEE 802.1D for STP (Spanning Tree Protocol) IEEE 802.1p for COS (Class of Service) IEEE 802.1Q for VLAN Tagging IEEE 802.1w for RSTP (Rapid Spanning Tree Protocol) IEEE 802.1s for MSTP (Multiple Spanning Tree Protocol) IEEE 802.1X for Authentication IEEE 802.1AB for LLDP (Link Layer Discovery Protocol)
MAC Table	8192 MAC addresses
Priority Queues	4
Processing	Store-and-Forward
Switch Properties	Max. Number of Available VLANs:256 IGMP multicast groups: 256 Port rate limiting: User Define
Security Features	Enable/disable ports, MAC based port security ACL supported Port based network access control (802.1x) VLAN (802.1q) to segregate and secure network traffic Radius centralized password management SNMPv3 encrypted authentication and access security
Software Features	STP/RSTP/MSTP (IEEE 802.1D/w/s) Redundant Ring (O-Ring) with recovery time less than 10ms over 250 units TOS/Diffserv supported Quality of Service (802.1p) for real-time traffic VLAN (802.1Q) with VLAN tagging and GVRP supported IGMP Snooping for multicast filtering Port configuration, status, statistics, monitoring, security
Network Redundancy	O-Ring STP RSTP MSTP
LED Indicators	
Power Indicator	Green for power on.
Status Indicator	Green on for system ready
10/100TX RJ45 Port Indicator	Green at left for port Link/Act. Green at right for 100Mbps link
1000 Base-T / Fiber port Indicator	Green for port Link/Act.
Power	
Redundant Input Power	100~240VAC with power cord
Power Consumption (Typ.)	18 Watts on AC power
Overload Current Protection	Present

Physical Characteristic	
Dimension (W x D x H)	440mm(W)x200mm(D)x44mm(H)
Weight (g)	2480 g
Environmental	
Operating Temperature	-10 to 60°C (-14 to 140°F)
Operating Humidity	5% to 95% Non-condensing
Regulatory approvals	
EMI	FCC Part 15, CISPR (EN55022) class A
EMS	EN61000-4-2 (ESD), EN61000-4-3 (RS), EN61000-4-4 (EFT), EN61000-4-5 (Surge), EN61000-4-6 (CS), EN61000-4-8, EN61000-4-11
Warranty	2 years

> Ordering Information

IES-3 AA B CC



Code efnition	10/100TX Port Number	Additional Port Number	Additional Port Type
Option	- 24: 24 ports	- 2: 2 port	-GC: 1000 COMBO ports with SFP

Available Model	Model Name	Description
	IES-3242GC	Industrial 26-port Ethernet Switch with 24x10/100TX & 2x1000 COMBO port